

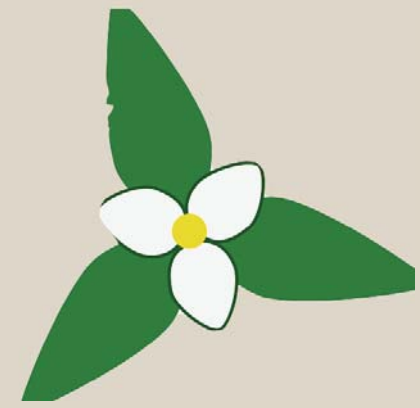
**JONATHAN & TIFFANY
VANN SPRECHER
BRUNSWICK-COLLEGE
PARKETTE DESIGN
COMPETITION
SUBMISSION**



BRUNSWICK-COLLEGE

PARKETTE

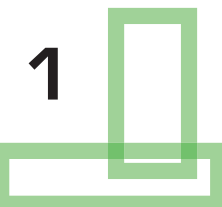
DESIGN COMPETITION

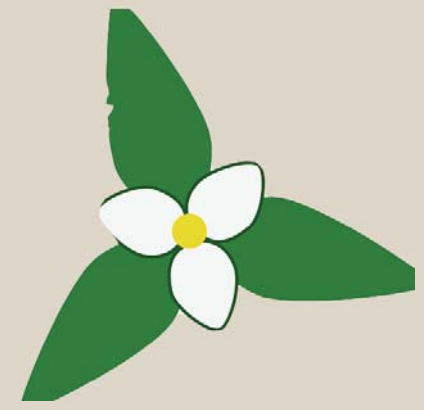


Our design proposal suggests a simple, elegant, and cost-effective solution to the problems posed by the current Brunswick-College Parkette. A graceful progression of cubic landscape elements defines the edge of the park as well as entrances and circulation. Further, these elements provide a dynamic, multivalent opportunity for sitting, playing and interacting.

The block scheme creates multiple spaces within one area – the blocks’ varied height lets people sit near one another without sitting next to one another, allowing for privacy in public. However, the block space is flexible enough that large groups can also enjoy it, and interpersonal interaction is natural.

The design calls for an imaginative array of blocks, generating an amalgam of concrete blocks and blocks with a sod substrate on a frame, in which grass actually grows right on them. Additionally, the Health Center vents are protected by bronze trillium sculptures, taking their inspiration from Ontario’s official flower.





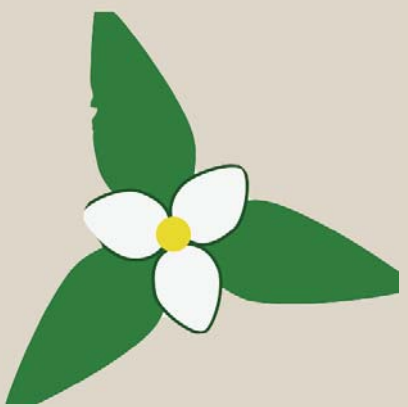
BRUNNSWICK-COLLEGE
PARKETTE
DESIGN COMPETITION



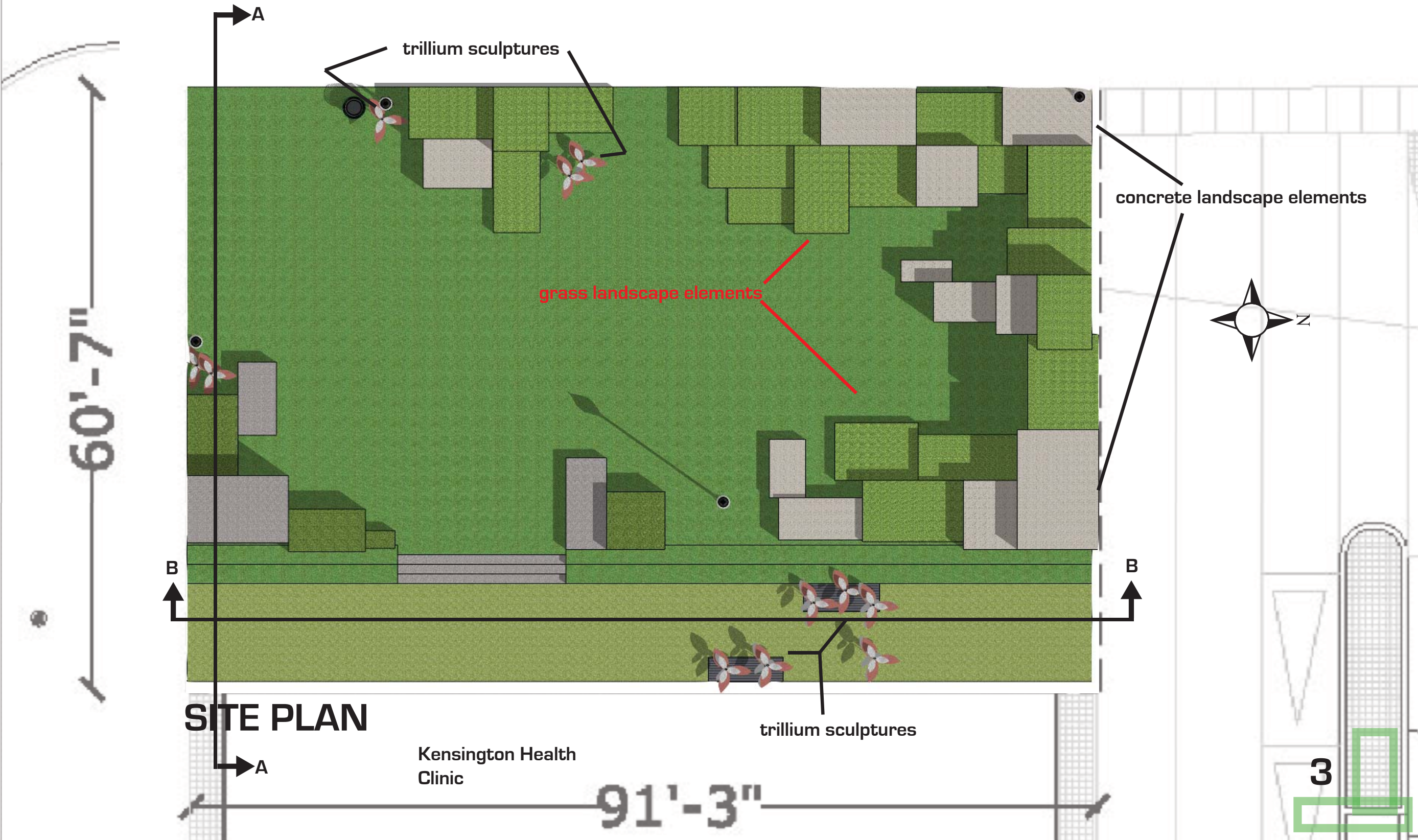
LOOKING EAST THROUGH PARK



BRUNSWICK AVENUE



DESIGN COMPETITION
BRUNSWICK-COLLEGE
PARKETTE



60'-09"

SITE PLAN

Kensington Health Clinic

91'-3"

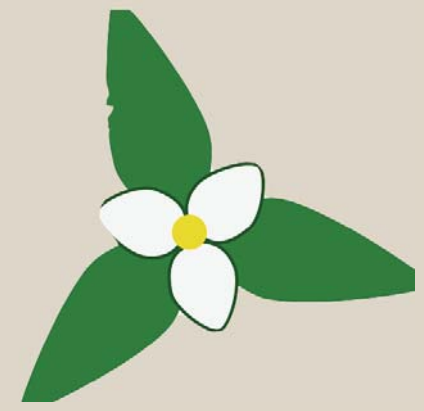
concrete landscape elements

grass landscape elements

trillium sculptures

trillium sculptures

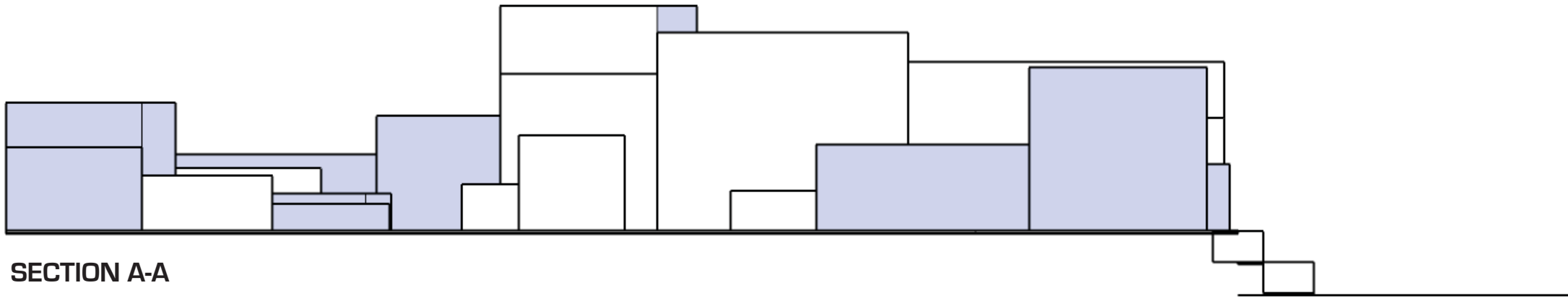
3



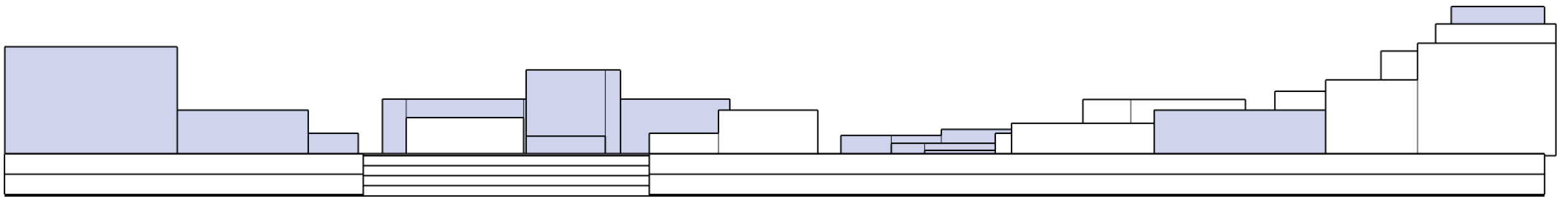
BRUNSWICK-GOLLEGE

PARKETTE

DESIGN GOMPETITION



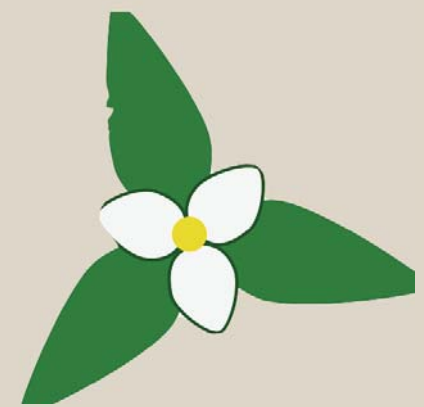
SECTION A-A



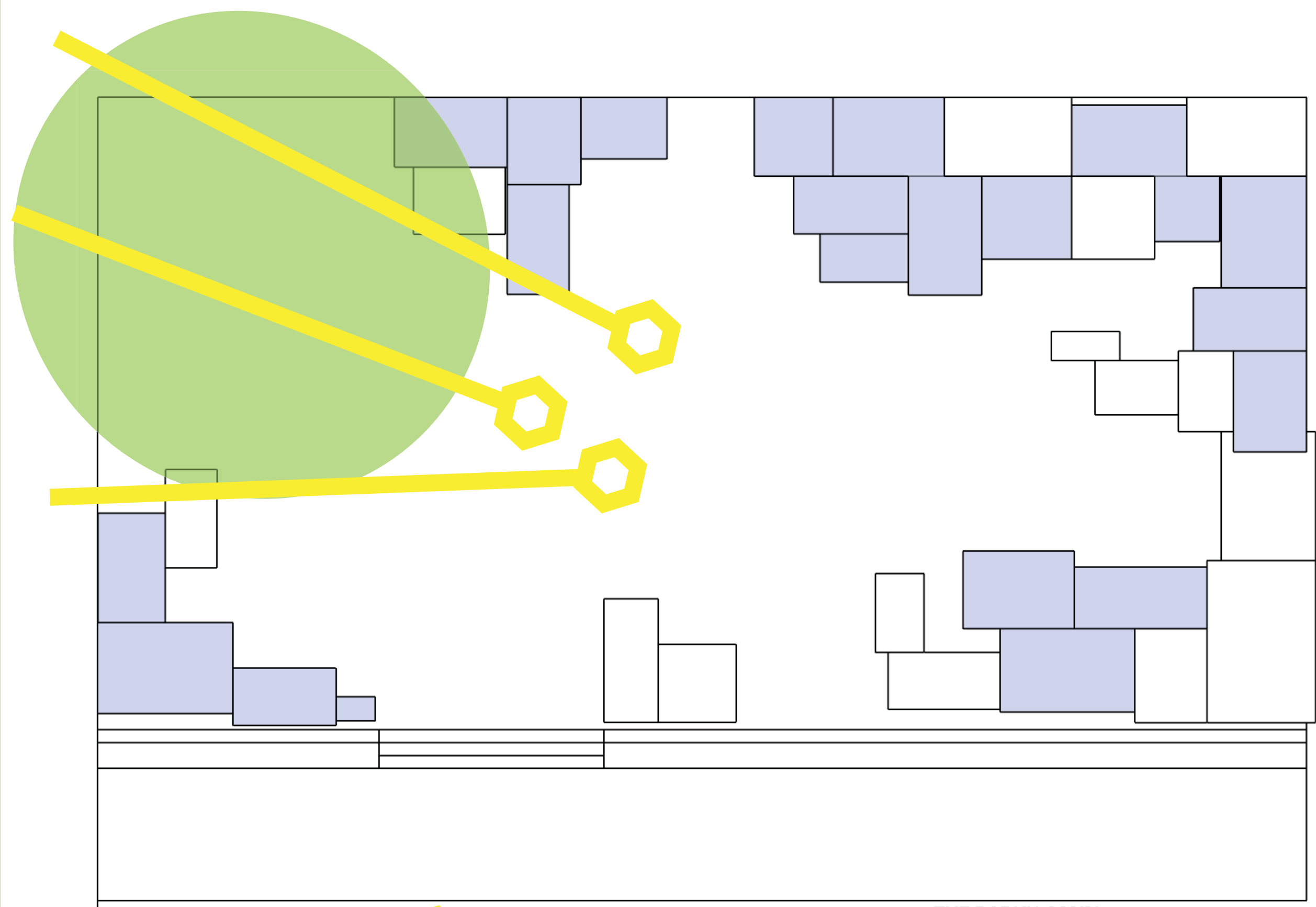
SECTION B-B

SECTIONS

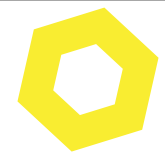




BRUNSWICK-COLLEGE
 PARKKETTLE
 DESIGN COMPETITION



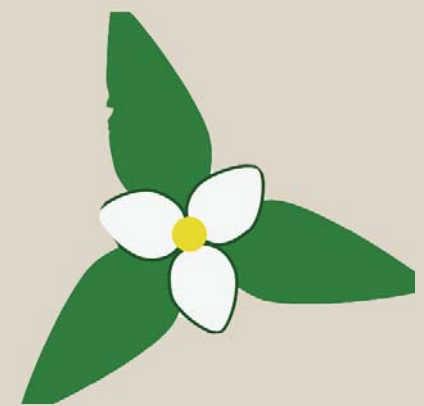
EXPOSURE



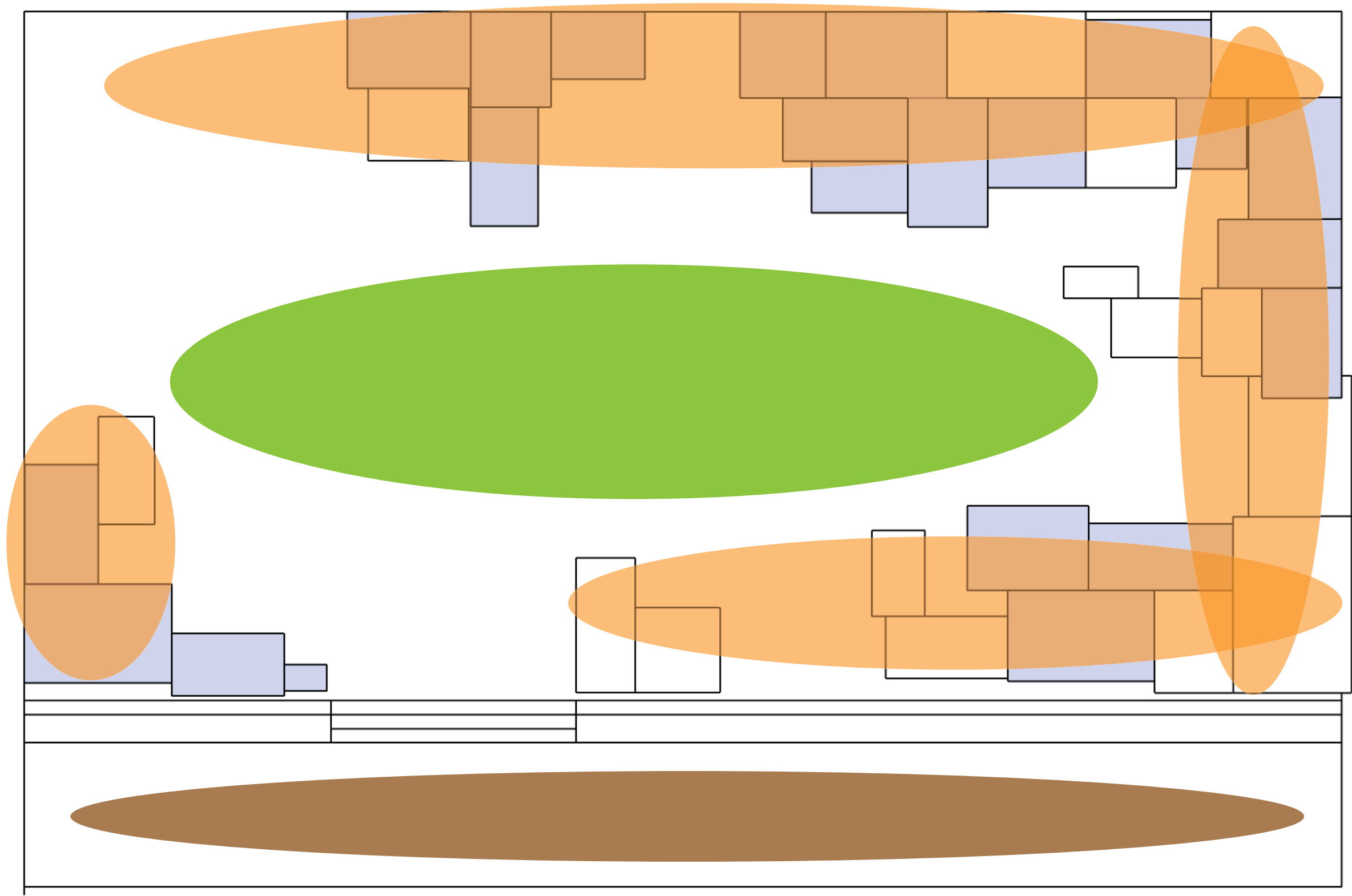
THE PARK IS ORIENTED TO THE SOUTH,
 MAXIMIZING SUN EXPOSURE



THE PARK'S MAIN
 ENTRANCE/OPENING CONNECTS TO
 THE BUSY CORNER OF COLLEGE AND
 BRUNSWICK



BRUNNSWICK-COLLEGE
PARKETTE
DESIGN COMPETITION

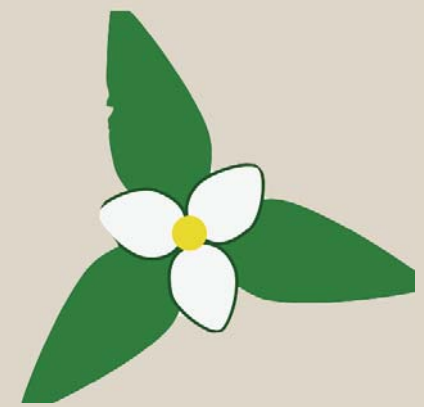


VARIED USE

 LANDSCAPING FOR SITTING, CLIMBING, PLAYING

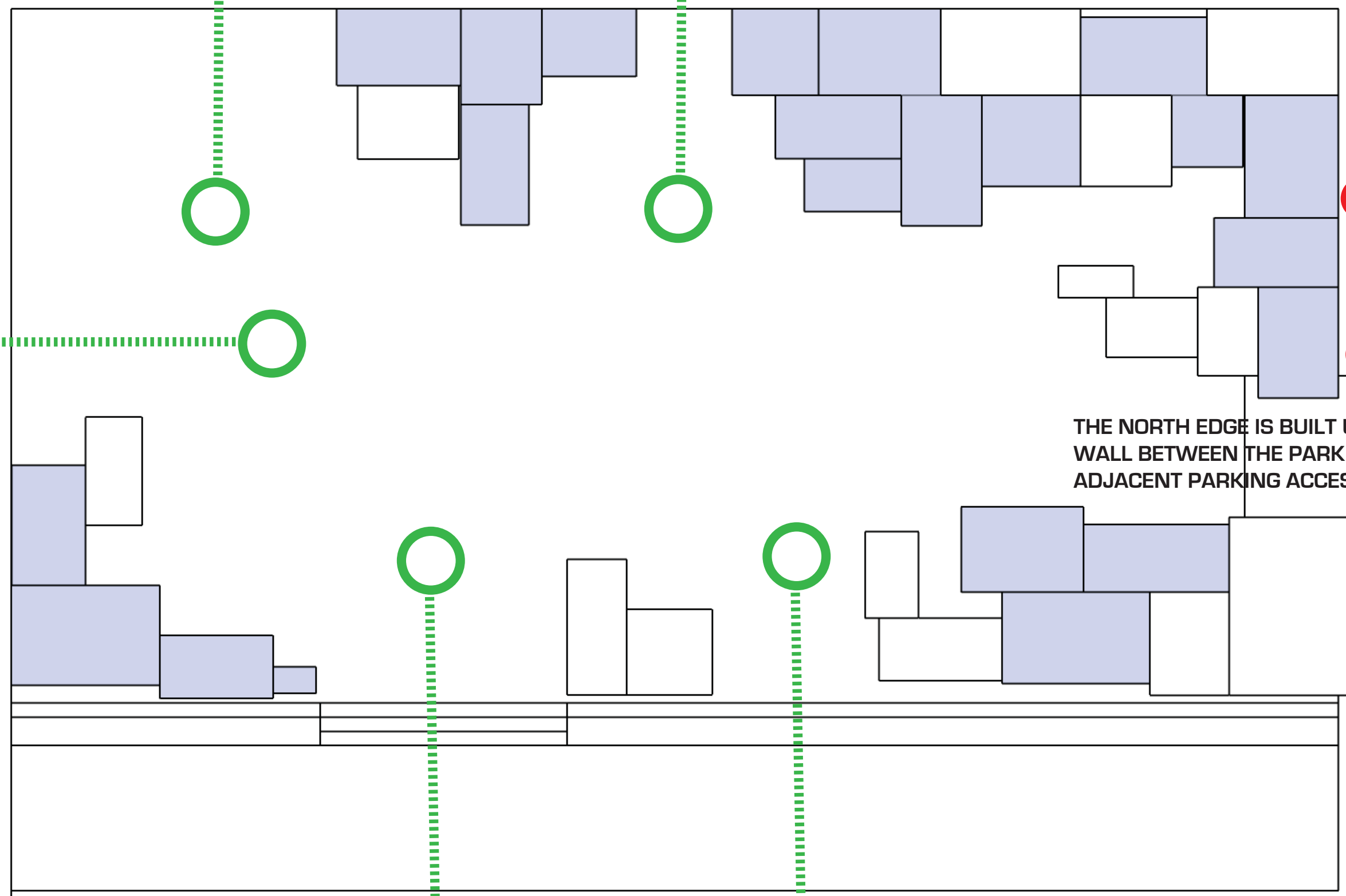
 OPEN GRASS FOR PLAY AND LOUNGING

 LOWER GRASS AREA - BUILDING ENTRANCE AND STEPS TO PARK



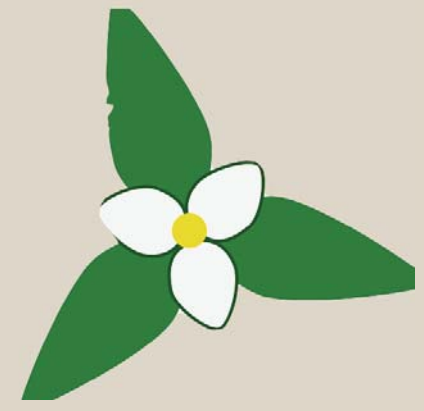
BRUNNSWICK-GOLLEGE
PARKETTE
DESIGN COMPETITION

DESIGN ELEMENTS DEFINE THE PARK EDGE
WHILE MAINTAINING PERMEABILITY FOR
PEDESTRIAN TRAFFIC AND SIGHT LINES

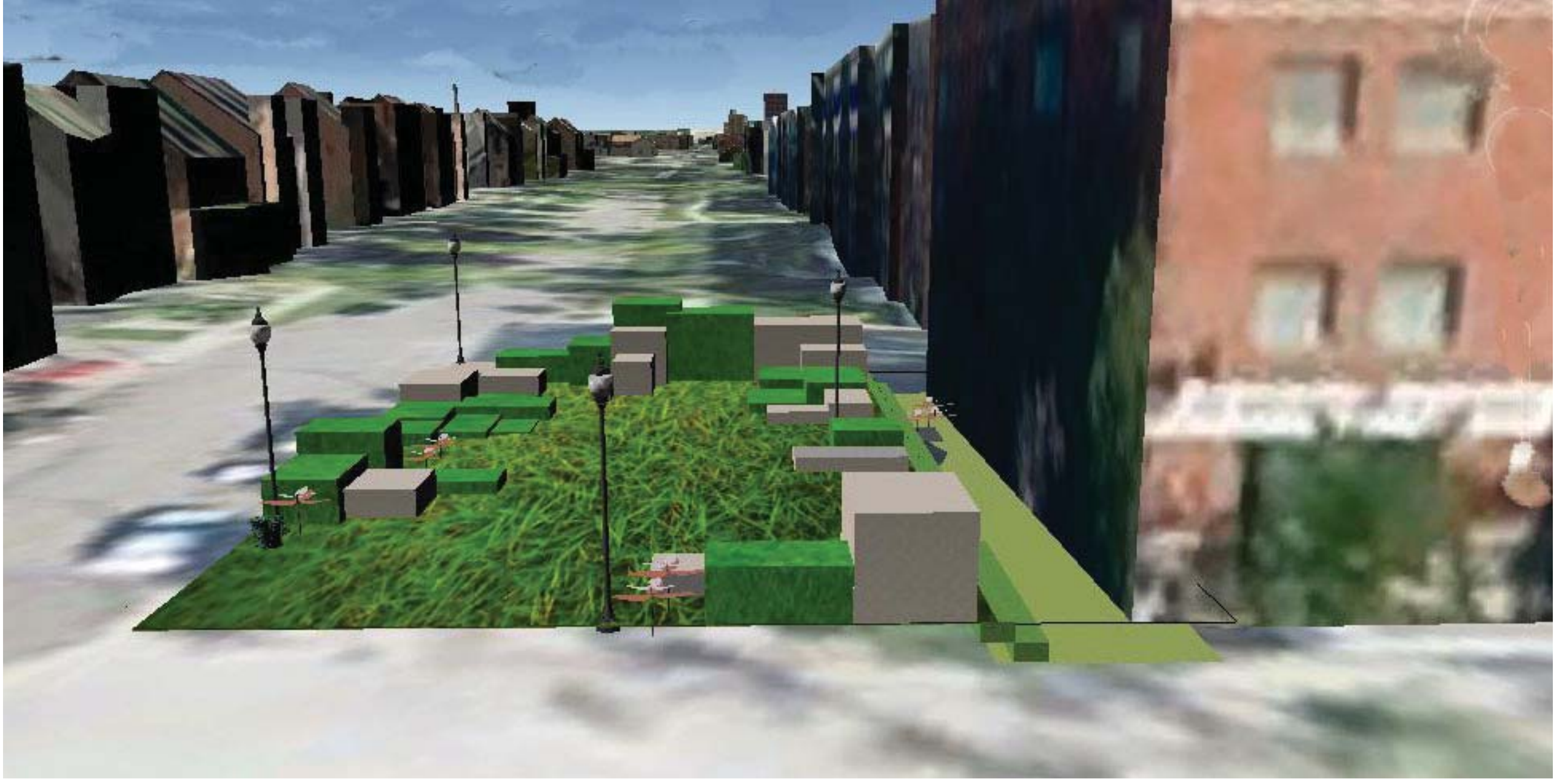


THE NORTH EDGE IS BUILT UP, CREATING A
WALL BETWEEN THE PARK AND THE
ADJACENT PARKING ACCESS

PERFORATED EDGE CONDITION

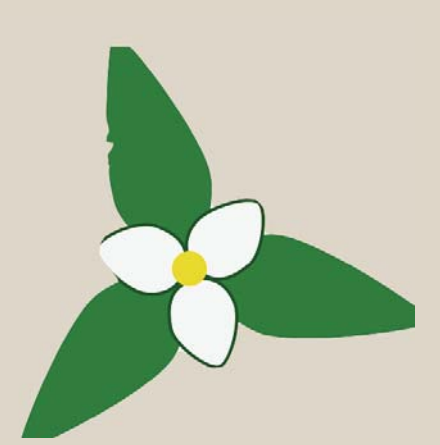


DESIGN COMPETITION
PARKLETTE
BRUNSWICK-COLLEGE

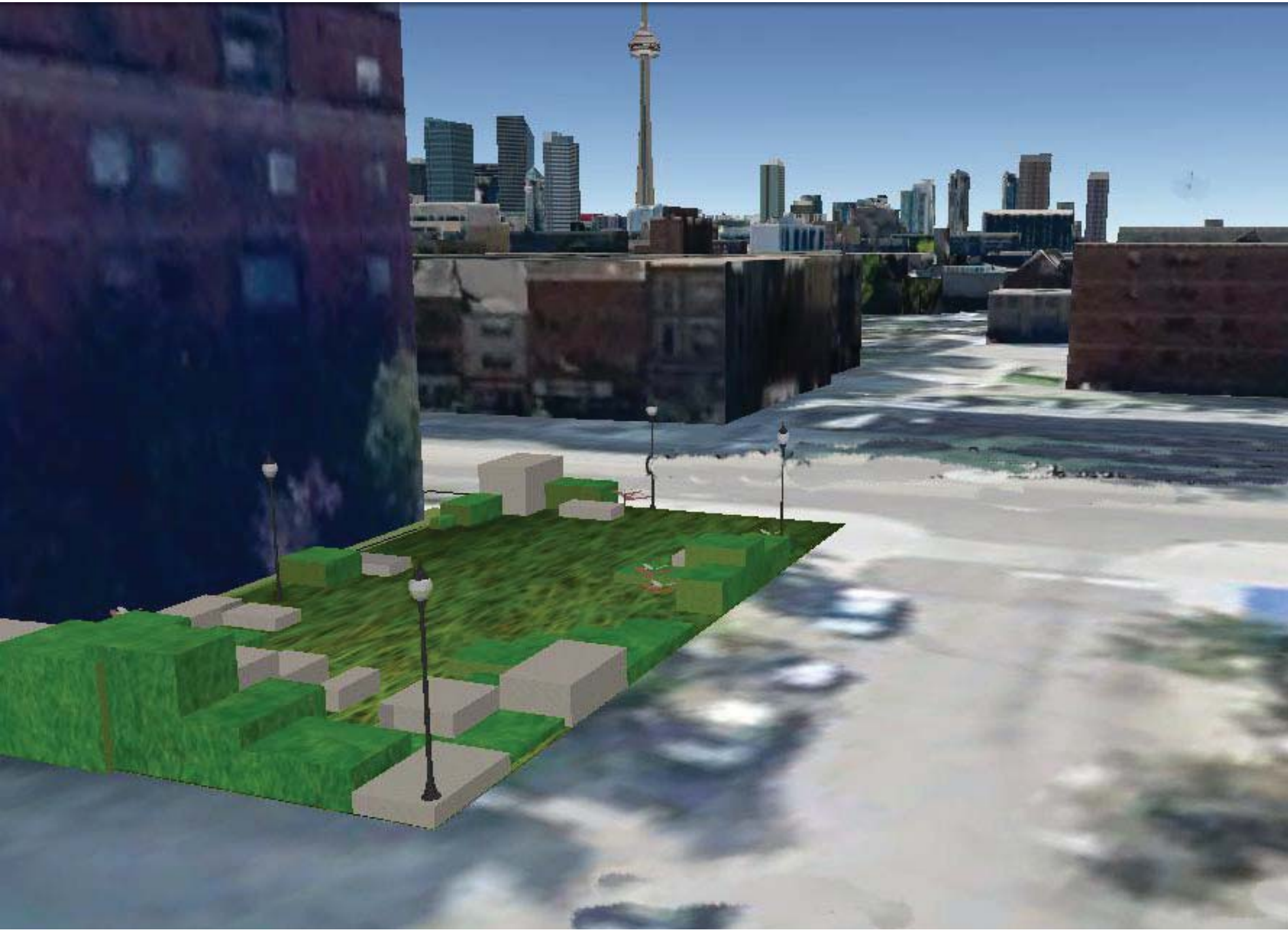


**VIEW LOOKING NORTH ALONG
BRUNSWICK**

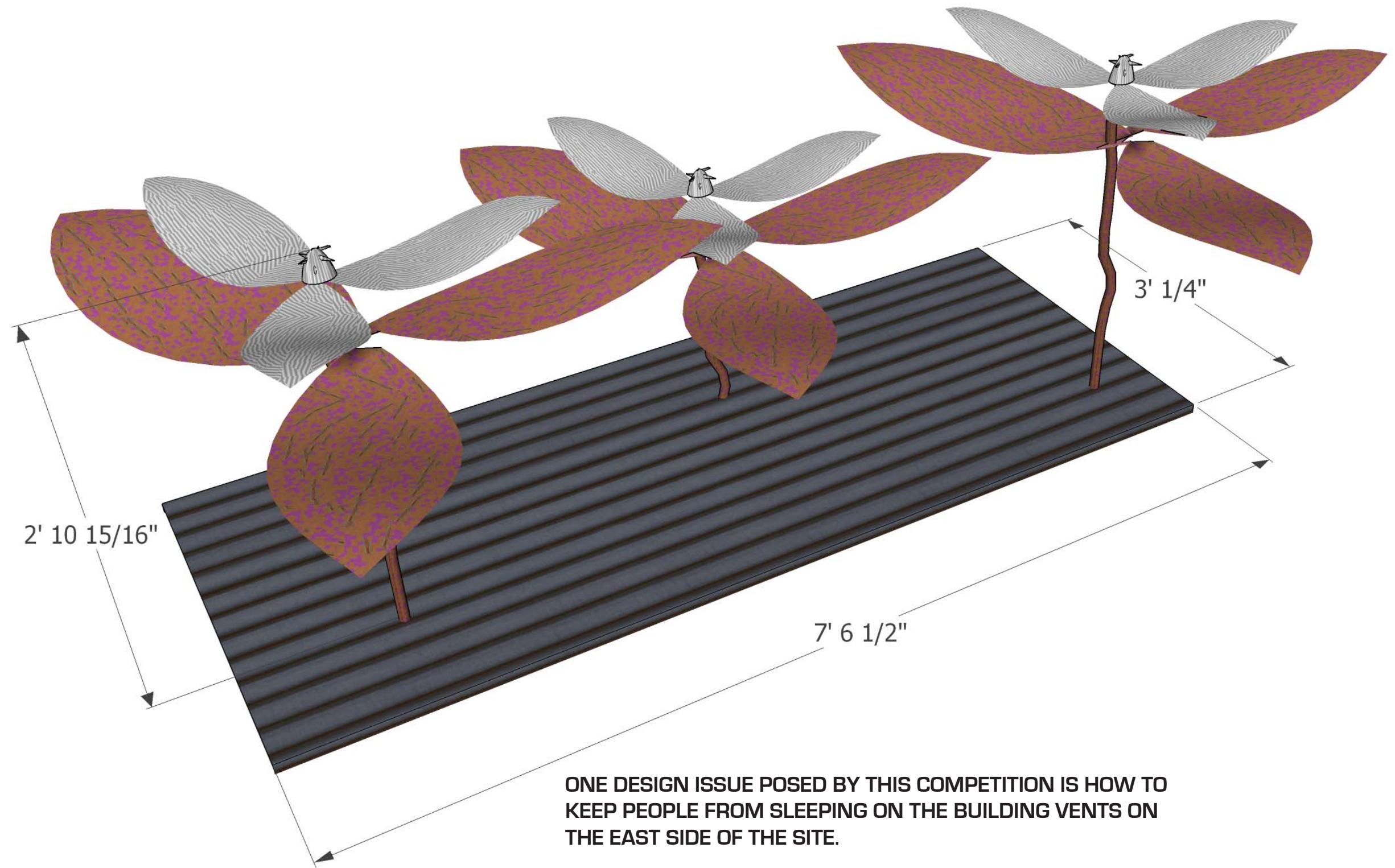
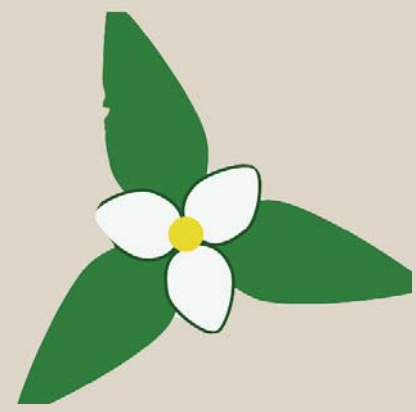




BRUNNSWICK-COLLEGE
PARKETTE
DESIGN COMPETITION



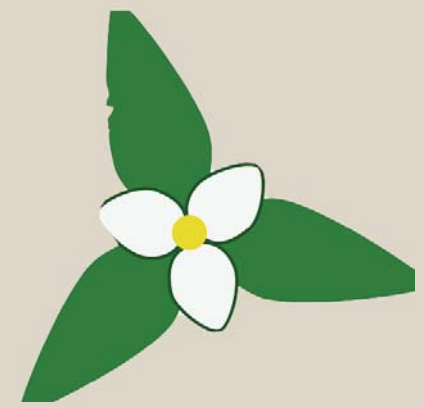
**VIEW LOOKING
SOUTHEAST**



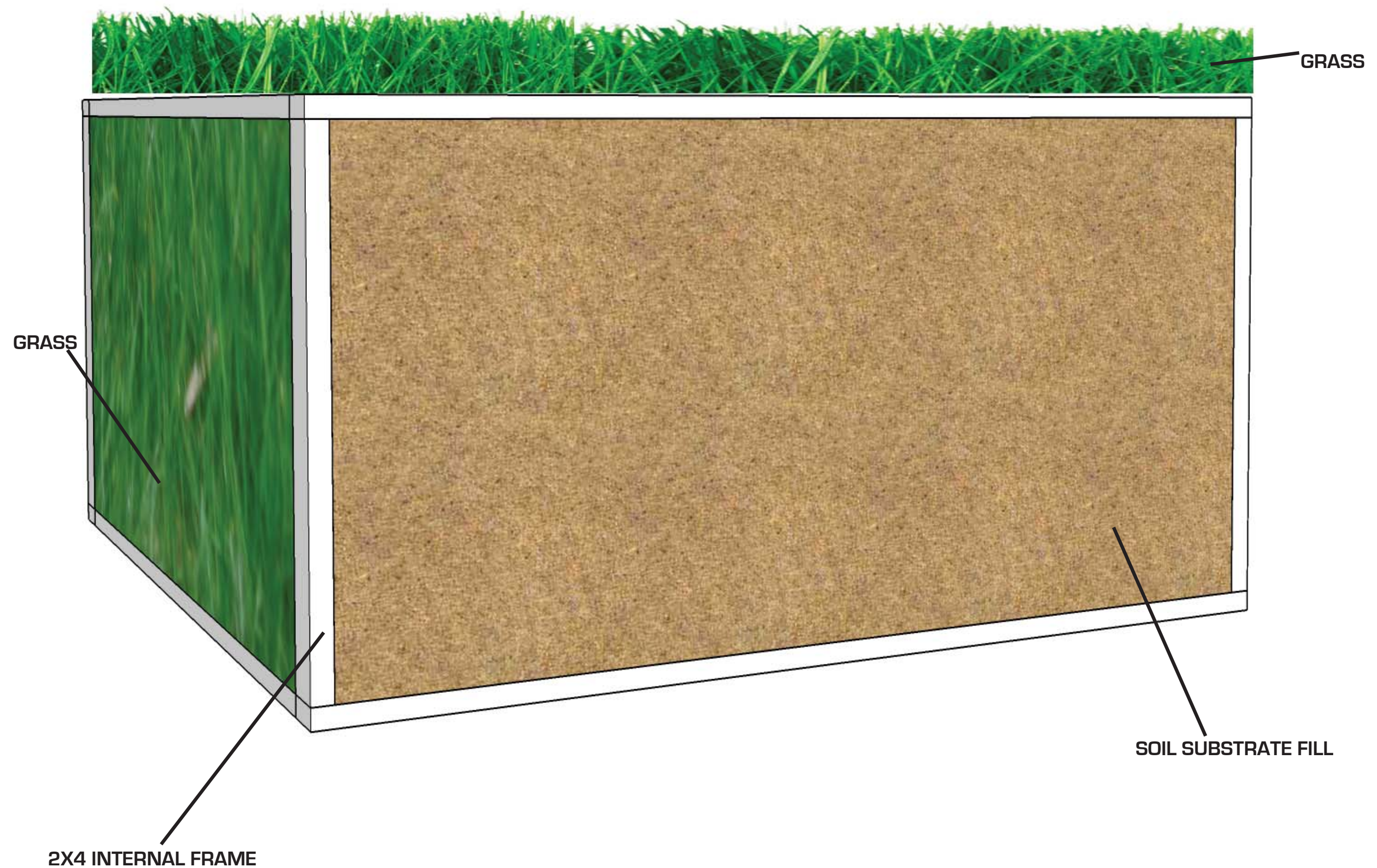
TRILLIUM SCULPTURE DETAIL

ONE DESIGN ISSUE POSED BY THIS COMPETITION IS HOW TO KEEP PEOPLE FROM SLEEPING ON THE BUILDING VENTS ON THE EAST SIDE OF THE SITE.

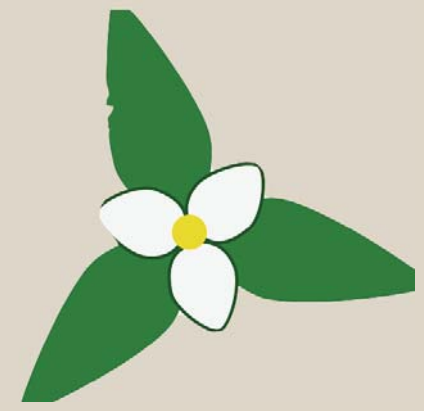
THE PROPOSED SOLUTION TAKES AS INSPIRATION THE OFFICIAL FLOWER OF ONTARIO, THE TRILLIUM. BRONZE SCULPTURES RANGING FROM 2' TO 3.5' IN HEIGHT ARE PLACED ON THE VENTS, PROVIDING A SOLUTION TO THE PROBLEM WHILE BEAUTIFYING THE PARK. ADDITIONALLY, THE BRONZE TRILLIUMS ARE SCATTERED THROUGHOUT THE PARK IN OTHER LOCATIONS.



BRUNNSWICK-COLLEGE
PARKETTE
DESIGN COMPETITION



GRASS BLOCK CUT-AWAY DETAIL



DESIGN COMPETITION

BRUNNSWICK-COLLEGE
PARKETTE



LOOKING NORTH
THROUGH THE SITE

