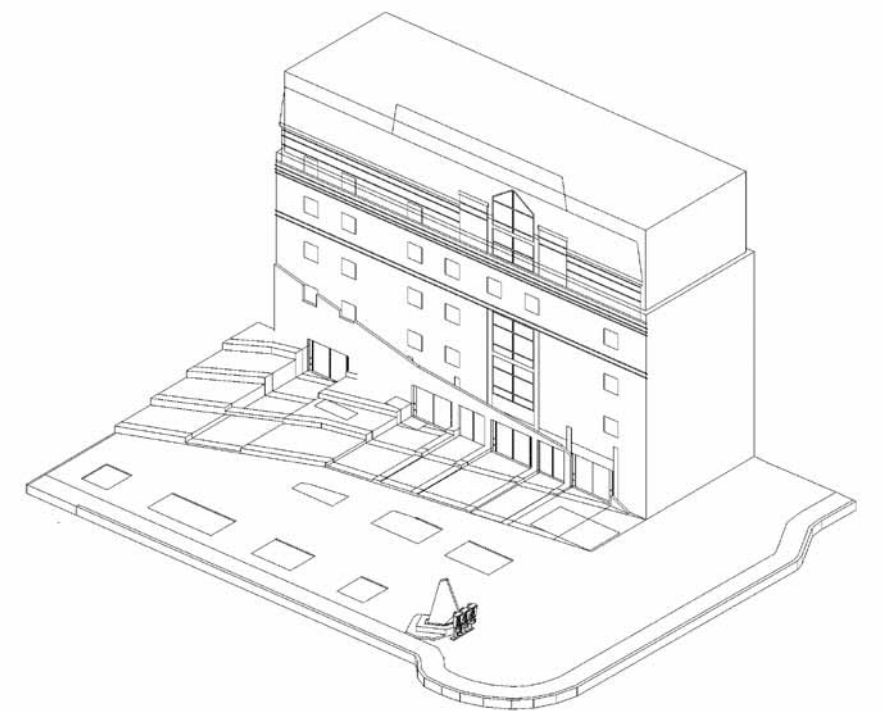


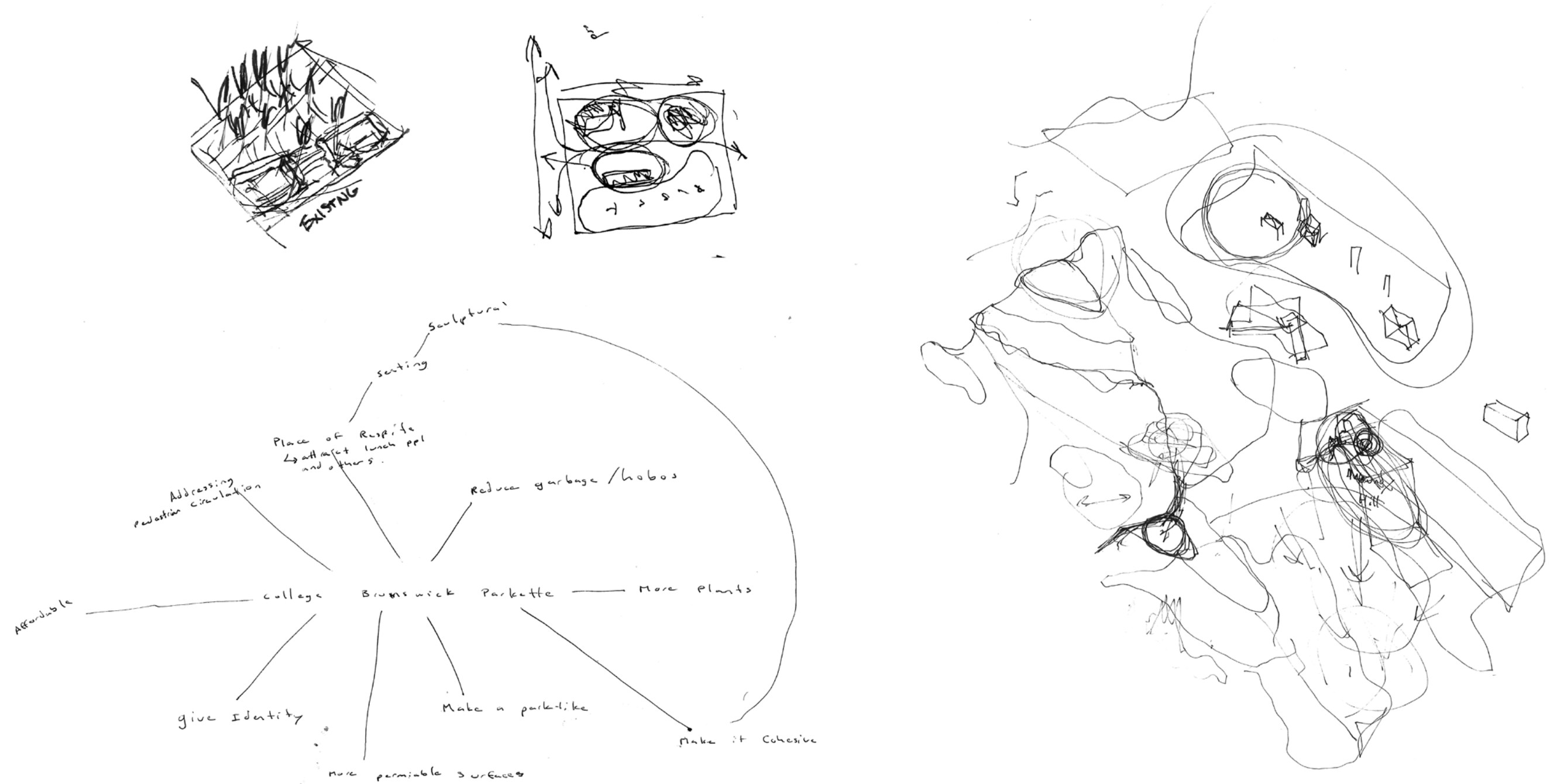
INTERSECTIONS: COLLEGE, BRUNSWICK, ECOLOGY
Clarence Lacy, Catherine Dean, Todd Douglas
University of Toronto Daniels Faculty of Architecture, Landscape and Design
Toronto Canada

Brunswick - College Parkette Design Competition



Our design for the Brunswick-College Parkette envisions a more inviting, comfortable and accessible space, as well as an attractive gateway to the Annex neighbourhood from College Street.

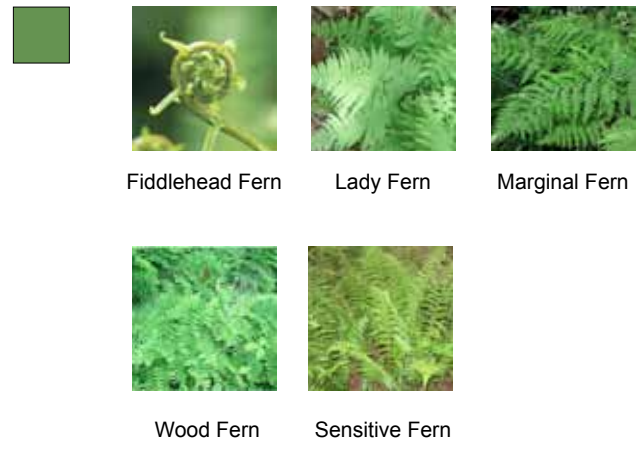
Our strategy is to increase the parkette's permeable and vegetated surfaces and to create areas for relaxation and socializing. The additional vegetation starts with the fern wall, which will provide cooling in the summer and help to mitigate the urban heat island effect. The fern wall connects to the terraced surfaces, which descend from the North East corner of the parkette and are planted with native species such as Dogwood, a variety of ferns, Lily-of-the-Valley, wild strawberries and red fescue, which serves as a walkable surface between the terrace-edge seating. Flowering Perennials toward College Street provide variety and colour, as well as habitat for butterflies, bees and other pollinators.



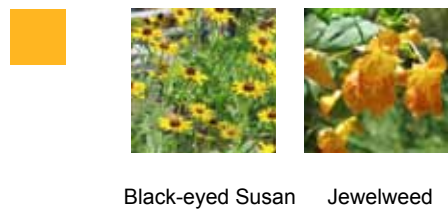
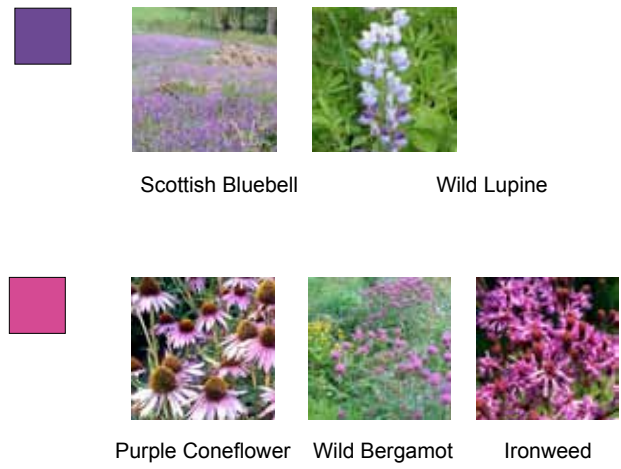
Understorey



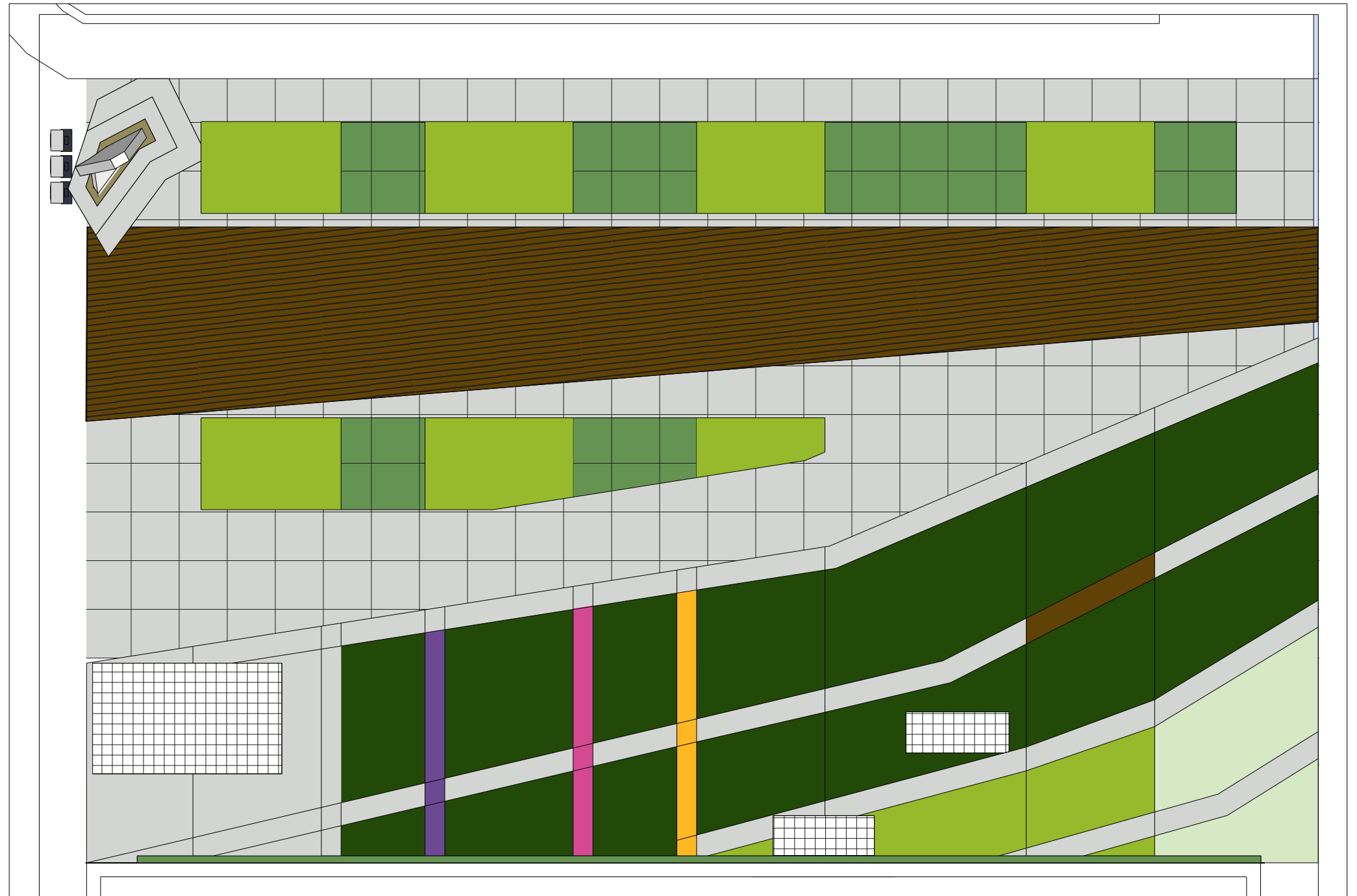
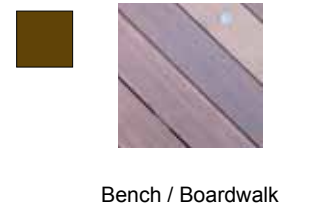
Fern Wall

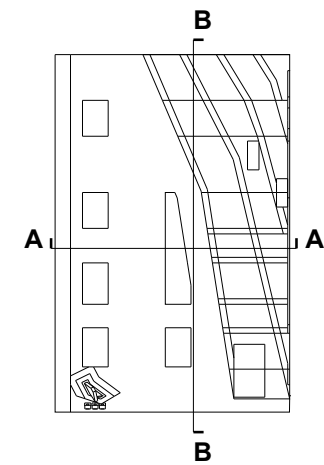
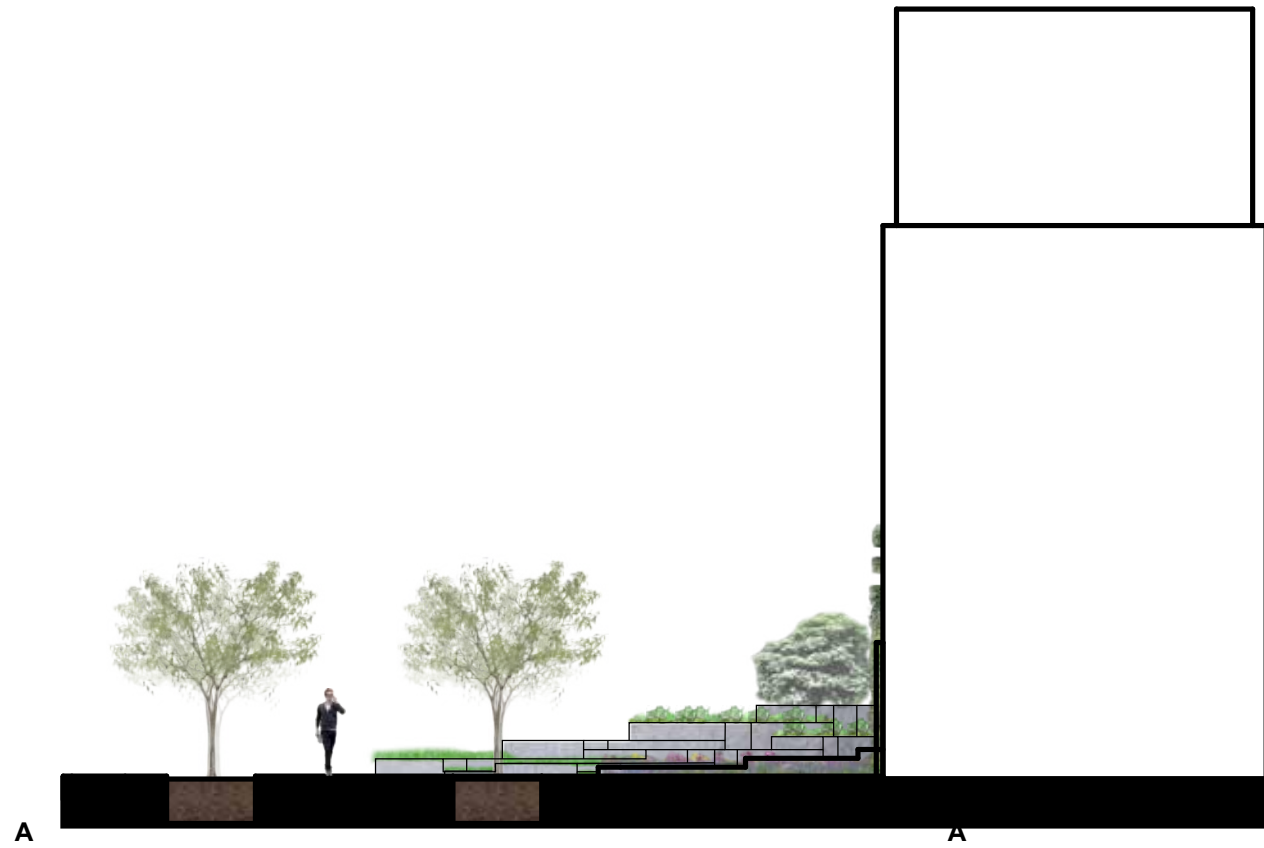


Flowering Perennials



Existing Trees





0 1 3 5 metres

