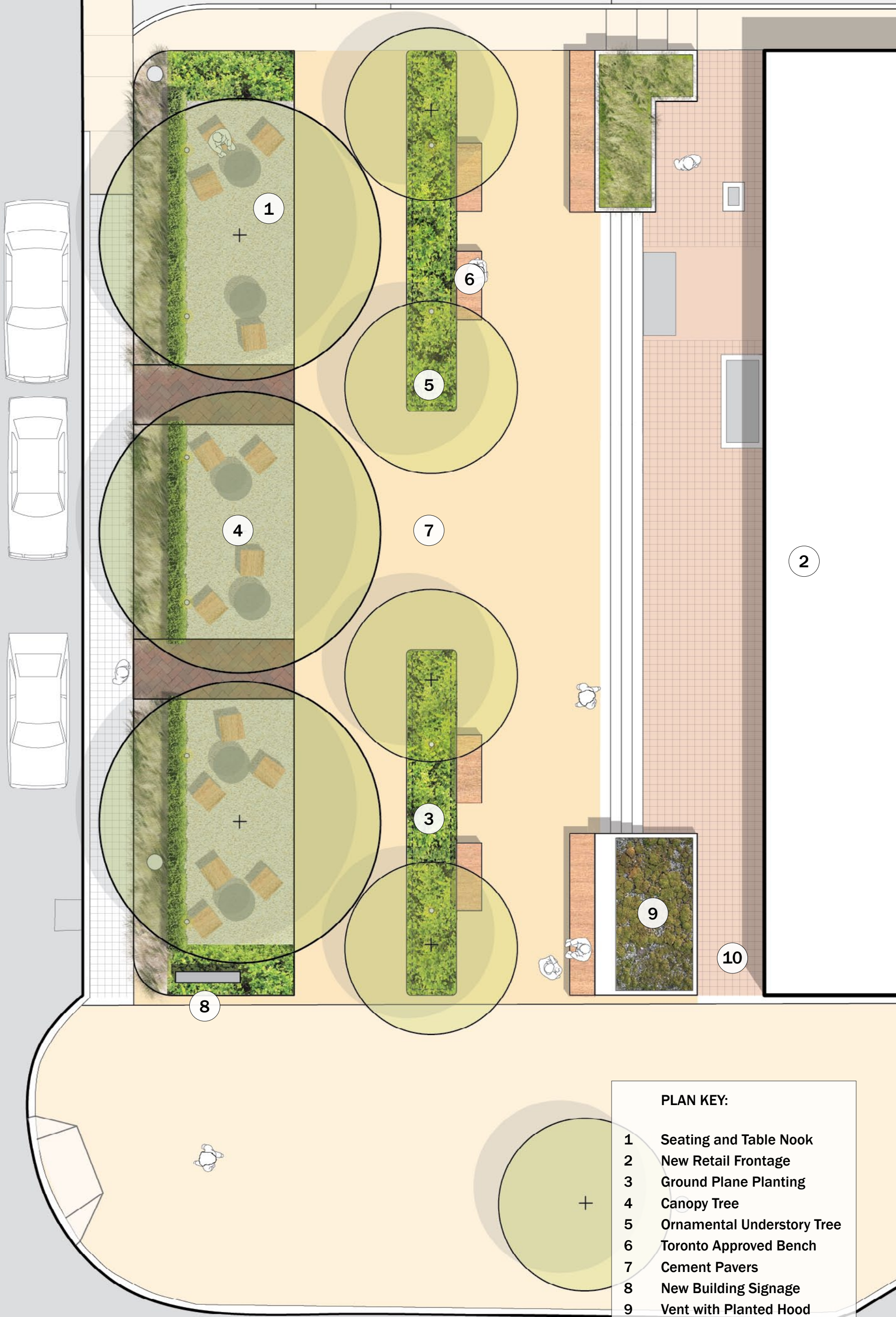


FLOW: PEOPLE, LIGHT & AIR

Elizabeth Keary & Matthew Soule

Our design seeks to create more reasons to linger in the park. We opened up the space in front of the building to allow better visual and physical access to facilitate ground floor retail opportunities by removing the trees and cutting through the raised planter. Nooks of tables and chairs were added along the street to attract patrons from surrounding food establishments. A center planted strip was added within the walkway make the space feel more intimate while still emphasizing movement through the space. A hood was designed for the vent grate that maintains air flow while transforming a purely functional object into a more attractive amenity that provides integrated seating and greenery.

Elizabeth Keary
Master of Landscape Architecture
UPenn School of Design, 2010



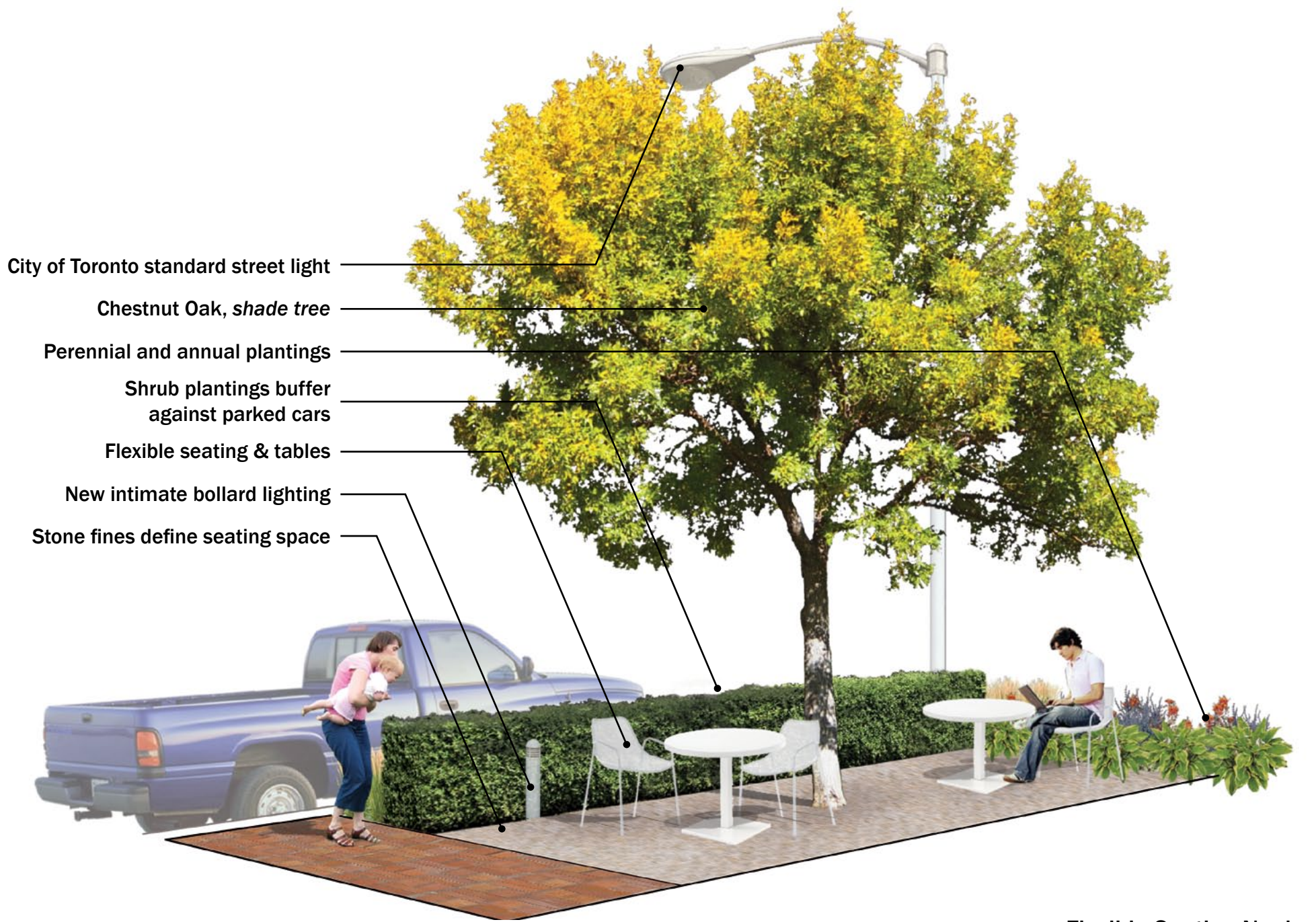
- PLAN KEY:**
- 1 Seating and Table Nook
 - 2 New Retail Frontage
 - 3 Ground Plane Planting
 - 4 Canopy Tree
 - 5 Ornamental Understory Tree
 - 6 Toronto Approved Bench
 - 7 Cement Pavers
 - 8 New Building Signage
 - 9 Vent with Planted Hood
 - 10 ADA Certified Access

BRUNSWICK-COLLEGE PARKETTE DESIGN

Illustrative Plan
Scale: 1/8" = 1'



Elizabeth Keary & Matthew Soule
March 31, 2011



City of Toronto standard street light

Chestnut Oak, *shade tree*

Perennial and annual plantings

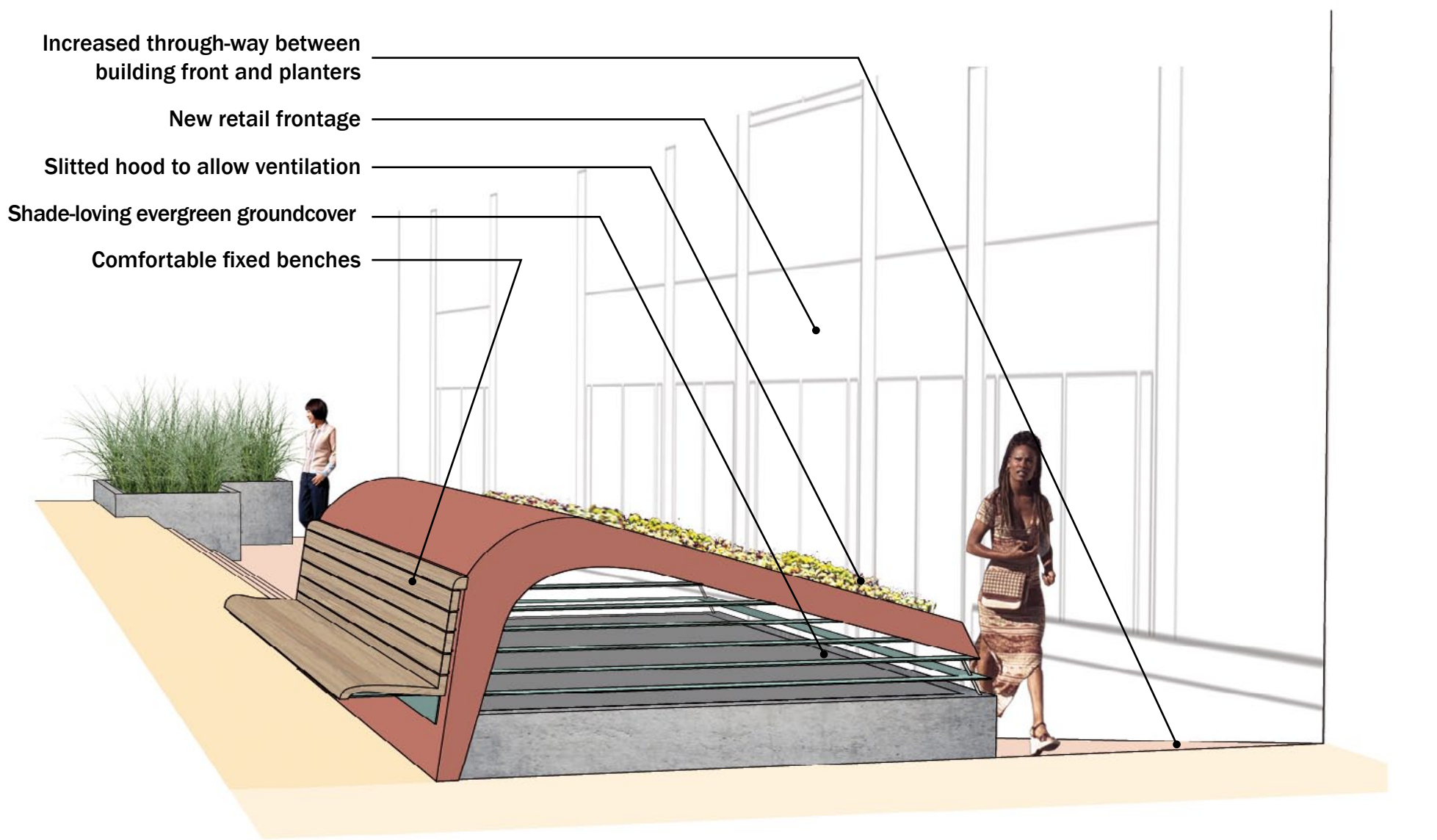
Shrub plantings buffer
against parked cars

Flexible seating & tables

New intimate bollard lighting

Stone fines define seating space

Flexible Seating Nook



Increased through-way between
building front and planters

New retail frontage

Slitted hood to allow ventilation

Shade-loving evergreen groundcover

Comfortable fixed benches

Bench and Vent Hood

BRUNSWICK-COLLEGE PARKETTE DESIGN